

CASE STUDY BY POPPIN

# Managed by Q

## MANAGED BY Q

Managed by Q is the platform for office management. Q saves companies time by providing recurring and ad-hoc office services, from evening cleaning to IT support. Today, Q connects thousands of businesses across New York, San Francisco, Los Angeles, and Chicago to the services needed to seamlessly manage their workspace.

## AT A GLANCE

Employees: 145

Location: SoHo, New York City

Industry: Internet, Office Services

Products: Series A Double Desks, Max Task Chairs, Pitch Rolling Chairs, Upbeat Stools, Stow File Cabinets

## DESIGN CHALLENGE

Managed by Q moved to a new office and needed an open, collaborative workspace. They wanted a clean and polished look that reflects their brand and also gets employees excited to come to work.

## THE GOAL

- Create a layout that accommodates different working styles
- Represent the brand with a clean, polished look
- Make employees feel at home with a comfortable workspace

## THE SOLUTION

- Series A Desk System with Max Task Chairs and Stow File Cabinets
- Breakout spaces for collaboration equipped with Charcoal Upbeat Stools
- Simple + neutral color palette



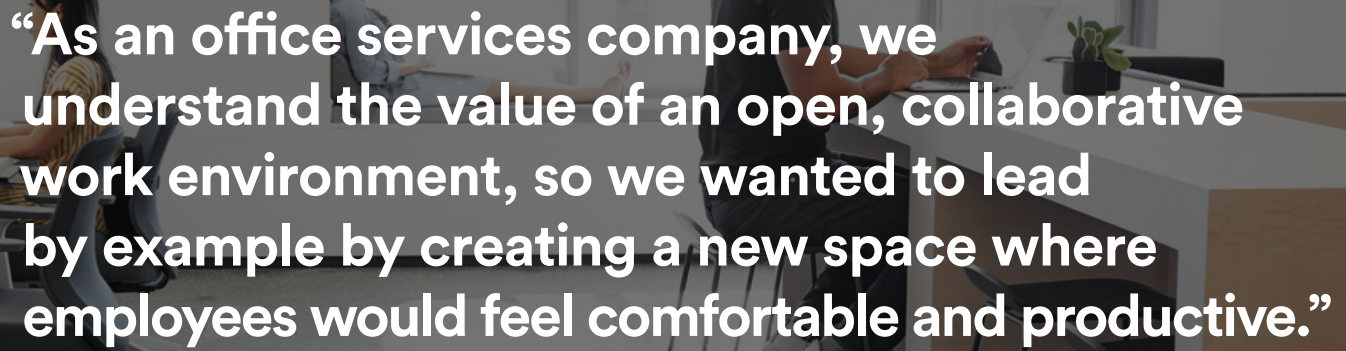
**poppin.**

*work happy.*

FLAGSHIP SHOWROOM  
16 Madison Sq West, 3rd Fl  
(Broadway + 25th St)  
New York, NY 10010

For other showroom  
locations visit:  
[poppin.com/showrooms](http://poppin.com/showrooms)  
.....  
(888) 676 - 7746  
[sales@poppin.com](mailto:sales@poppin.com)  
[#poppin](https://twitter.com/poppin) [#workhappy](https://www.instagram.com/poppin)  
.....

©Poppin 2019



“As an office services company, we understand the value of an open, collaborative work environment, so we wanted to lead by example by creating a new space where employees would feel comfortable and productive.”

- Layna Germino, Office Manager



#### MIX + MATCH

We helped customize the space by combining White Series A Desks with Dark Gray Max Task Chairs and Black Stow File Cabinets for a clean, high-contrast look that complements the modern office and reflects their brand.

*Rows of open Series A Desks allow for office-wide communication and collaboration.*

#### COME TOGETHER

Managed by Q values a creative and collaborative office environment, so we designed breakout spaces to encourage team brainstorm or informal meetings.

*Standing Tables and Upbeat Stools work double-duty as an ergonomic standing zone and lunchtime seating.*





*Khaki Pitch Rolling Chairs carry the clean, neutral palette throughout the office for a cohesive look.*

## MAXIMIZE SPACE

By creating separate work zones throughout the office, Managed by Q has several designated workspaces for private work, collaborative thinking, and formal meetings.

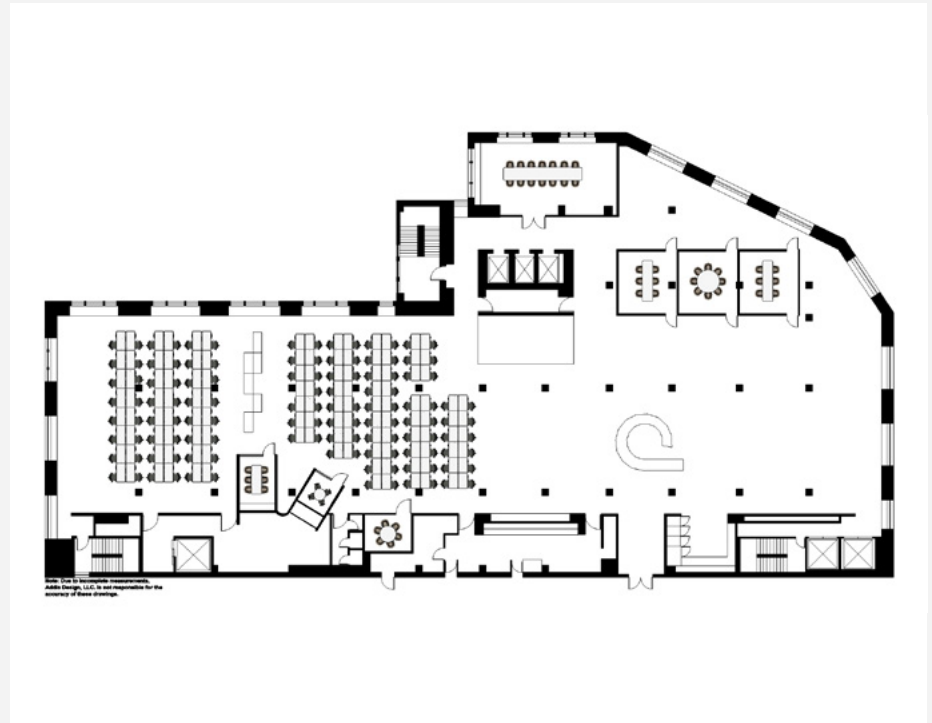


## FLOORPLAN

We work directly with brands to create a custom concept based on the project's unique needs.

## POPPIN TIP

To make a clean black and white palette feel modern and inviting, try incorporating additional furniture and accessories in neutral hues with varying textures for added warmth and dimension.



## SHOP THE SOLUTION

See how the Poppin Furniture Collection can work for you.



Stow File Cabinet



Series A  
Double Desk



Max Task Chair



Upbeat Stool