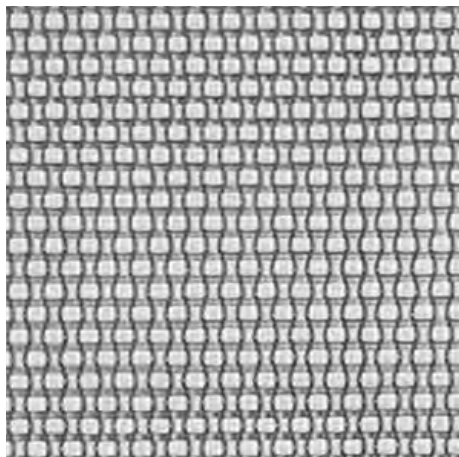
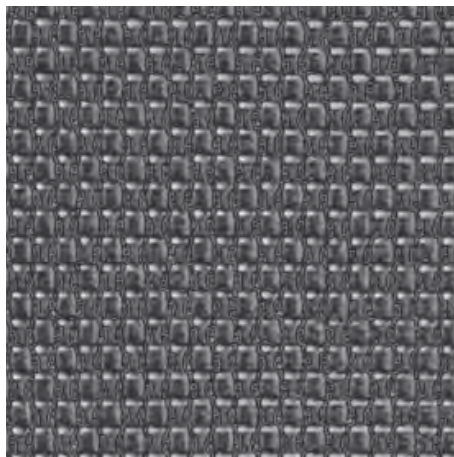


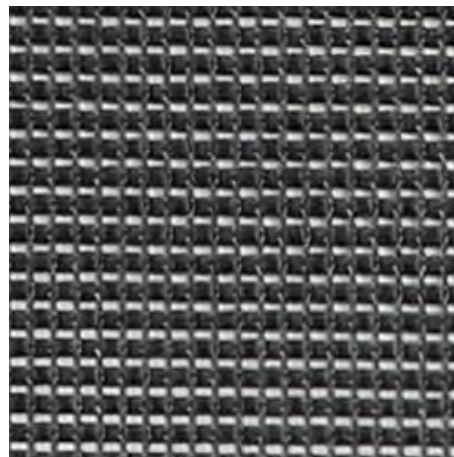
## BACKREST COLORS



Kate White



Kate Charcoal

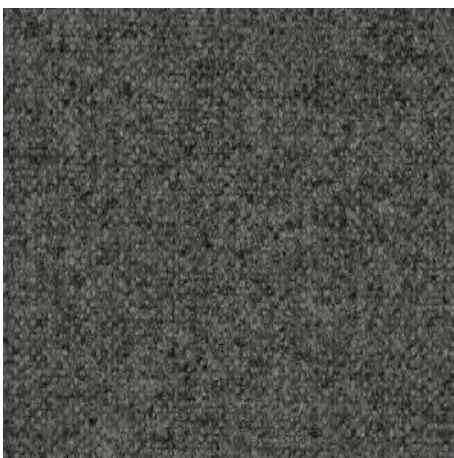


Kate Black

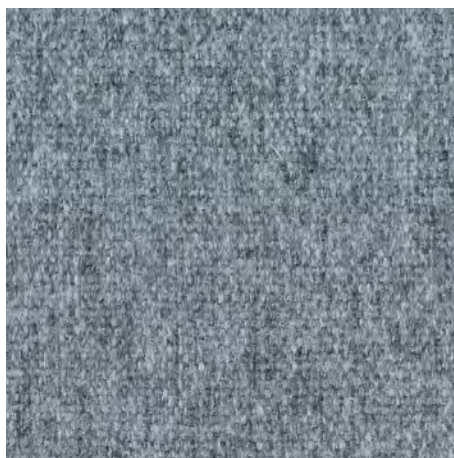
## SEAT COLORS



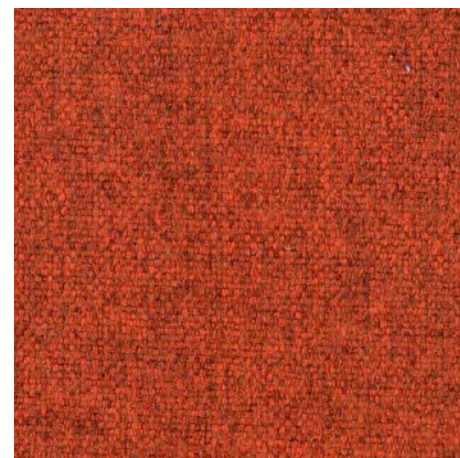
Dorset Silver



Dorset Charcoal



Dorset Sea



Dorset Cayenne

**poppin.**

# Maxwell Upholstery Fabric

MAXWELL UPHOLSTERY FABRIC DETAILS

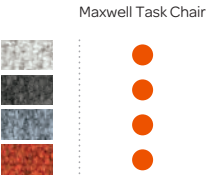
BACKREST:

- Content:** 64% polyester + 36% polyelastomer
- Abrasion Resistance:** ISO 12947-2:2016 Martindale Method, above 100,000 cycles
- Weight:** 518g/linear meter
- Color Fastness to Light:** AATCC16A-2014: Class 4.5 @ 40 hrs
- Color Fastness to Rub:** AATCC 8-2016, Class 4.5 Dry/Class 4.5 Wet
- Pilling Resistance:** ISO 12945-2:2020 Martindale Method, Class 4
- Flammability Resistance:** TB-117-2013

SEAT:

- Content:** 100% Polyester
- Abrasion Resistance:** ASTM D4157 Wyzenbeek 55,000 cycles
- Weight:** 17.28 oz./yard (= 536g per linear meter)
- Color Fastness to Light:** AATCC16A: Class 4 @ 40 hrs
- Color Fastness to Rub:** AATCC 8, Class 4 Dry/Class 3 Wet
- Pilling Resistance:** ASTM D3511, Class 4
- Flammability Resistance:** TB-117, UFAC Class 1, NFPA 260 Class 1, ASTM E-84 Class 1
- Unique Performance:** LiveSmart moisture repellency and stain resistance

Availability:



Subject to slight variations in color.

ABOUT POPPIN

Poppin's office products and furniture are designed for the dynamic needs of the changing workspace. With beautiful design, transparent pricing, and a dedicated Workstylist by your side, Poppin makes it effortless and affordable to achieve your vision.

100% WORK HAPPINESS GUARANTEED.

For full warranty details, visit [poppin.com](https://poppin.com)

Availability as of August 2021.  
For the latest, use the QR Code.



**poppin.**  
*work happy.*

FOR SHOWROOM LOCATIONS, VISIT  
[poppin.com/showrooms](https://poppin.com/showrooms)

888-676-7746  
[poppin.com/contact](https://poppin.com/contact)  
[@poppin](https://twitter.com/poppin) [#workhappy](https://www.instagram.com/poppin)

©Poppin 2021

