

*the up-the-wall*

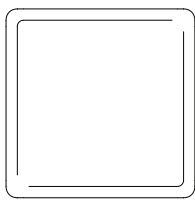
# Dry Erase Board + Fabric Pinboard

## MOUNTING INSTRUCTIONS

Comes with:



3M COMMAND™ STRIPS



WALL BOARD or FABRIC PINBOARD



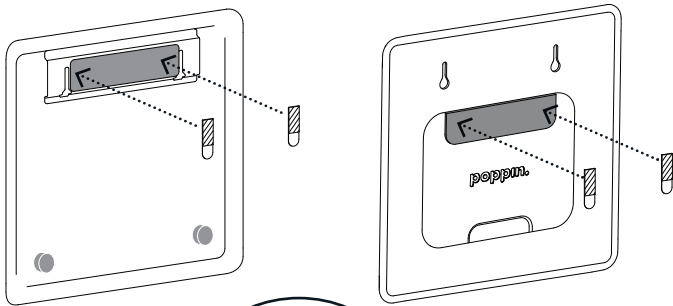
ANCHORS



SCREWS

### 3M Command™ Strips

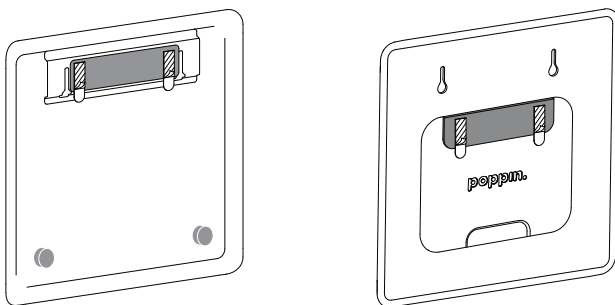
1. Peel away the strips' red liners and place the Command™ Strip on the magnet surface. Apply pressure for about 30 seconds.



#### HEADS UP!

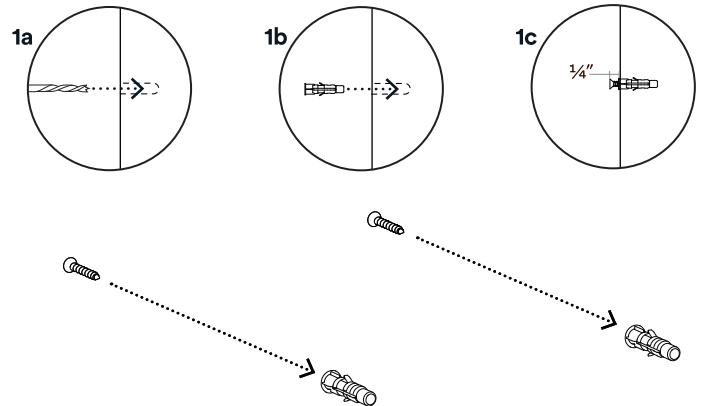
Before applying strips to the wall surface, spot-clean with rubbing alcohol. Other cleaners might leave a slippery residue.

2. Peel away the black liner and place the Dry Erase Board or Fabric Pinboard on the wall. Apply pressure for about 30 seconds.

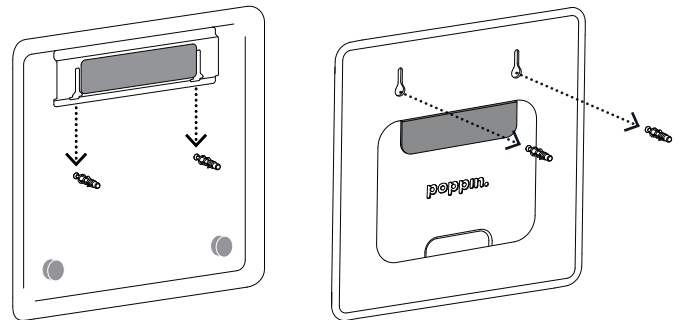


### Dry Wall Screws

1. **1a.** Using a 7/32" bit, drill a pilot hole in the dry wall. Repeat for second hole, 6 inches from first hole, ensuring the alignment is level.
- 1b.** Using a hammer, gently tap the screw anchors into the pilot holes.
- 1c.** Screw into the anchors, leaving 1/4" of the screw exposed.



2. Slot the wall board or fabric pinboard onto the exposed screws.



### ABOUT POPPIN

Poppin's furniture and office supplies are designed with your success in mind. From a day-brightening Stapler to a game-changing Desk System, Poppin is the one-stop shop for creating inspiring, modern workspaces.

### CARE

Doing a little dirty work? Soak up the spill and then blot with warm water + mild soap.

### 100% WORK HAPPINESS GUARANTEE

For full warranty details, visit [poppin.com](http://poppin.com)

### WARNING/DISCLAIMER

Listen up, daredevils! (And anyone trying to reach that top shelf). Do not stand on this product. Use only as intended. Failure to follow these instructions could result in property damage or personal injury.

**Poppin, Inc.**  
1115 Broadway, 3rd Floor  
New York, NY 10010

(888) 676-7746  
[hi@poppin.com](mailto:hi@poppin.com)  
[@workhappy @poppin](https://www.instagram.com/workhappy)

For patent or patent application information visit [poppin.com/patents](http://poppin.com/patents)  
©Poppin 2019

v01\_Apr2019