

## Microsoft Envisions the Future in O+A Designed Space

What does the future look like? **Microsoft** is busy figuring it out, in its Envisioning Center, an innovation lab located in Redmond, WA, designed by **Studio O+A**. The design challenge? "Create a fluid, adaptable space in which a company dedicated to making the future brighter could audition emerging technologies in a plausible version of what an office 10 or 20 years from now will likely be." At the base of O+A's design is the concept that the office of the future will make technology invisible and effortlessly interactive.

FULL STORY ON PAGE 3...



## IIDA SoCal Honors 2018 Calibre Design Awards Winners

The **Calibre Design Awards**, held annually by **IIDA SoCal**, the Southern California Chapter of the **International Interior Designers Association (IIDA)**, celebrates design and recognizes the importance of collaboration and teamwork to realize successful projects across multiple typologies. The 30<sup>th</sup> edition of the gala event took place on Friday, May 18, at the Beverly Hilton in Beverly Hills, California. This year's Circle of Excellence Honorees are **Stanley Felderman** and **Nancy Keatinge**, partners at **Felderman Keatinge & Associates** based in Culver City, California.

FULL STORY ON PAGE 12...



## Concurrents – Environmental Psychology: Talking About Science (And Other Important)

In her officeinsight column, Sally Augustin regularly reports on science that can be applied in practice to create workplaces where people work to their full potential. This week, she shares the results of a study detailing how our response to scientific information is linked to what discussions of it sound like, literally. Sound has a big effect on our opinions of what we're hearing, and other sensory effects follow.

FULL STORY ON PAGE 20...



CITED:  
"YOU CAN LEAD A  
HORTICULTURE, BUT YOU  
CAN'T MAKE HER THINK."  
—DOROTHY PARKER



For complete releases,  
visit [www.officeinsight.com/officenewswire](http://www.officeinsight.com/officenewswire).

officeinsight

## PRODUCT INTROS

**>AGATI Furniture's new Roland Nook, designed primarily for libraries, offers a focus sanctuary space with thoughtful ergonomics and durable finishes in a small footprint.** In engineering Roland Nook, maintaining adequate space for backpacks, working surface, and caffeinated beverages was a must. To accommodate this, AGATI curved the front of the work table but maintained full-width dimensions at the back of the table. Its cantilevered design means no awkwardly-located supports that can interfere with comfortable leg placement. A full-length side ledge can hold such items as smartphones, coffee cups, or small bags off of the main workspace. Side panels are attached to a square, stainless steel framing structure which offers a contemporary and angular aesthetic. This design not only minimizes its floorplan

footprint, it helps maximize total interior volume to give a sense of spaciousness while adding durability. Side panels stop short of the floor by approximately one foot, which makes for easy vacuuming and floor maintenance. Additionally, since most panel scuff marks occur from "shoe rubs" at ground level, this design inherently reduces the chance for contacting the panels. Electrical power is channeled through the stainless steel framing, and access points are right at the main workspace.

[Read More](#)

**>LEVEL 4 DESIGNS introduced the Pola Round Collection by LC Studio.** This new design is an extension of the company's successful Pola Collection. Pola Round offers clean, simple lines and a variety of design elements for both indoor and outdoor applications. The standard design incorporates a polypropylene shell upper with a variety of base options in both



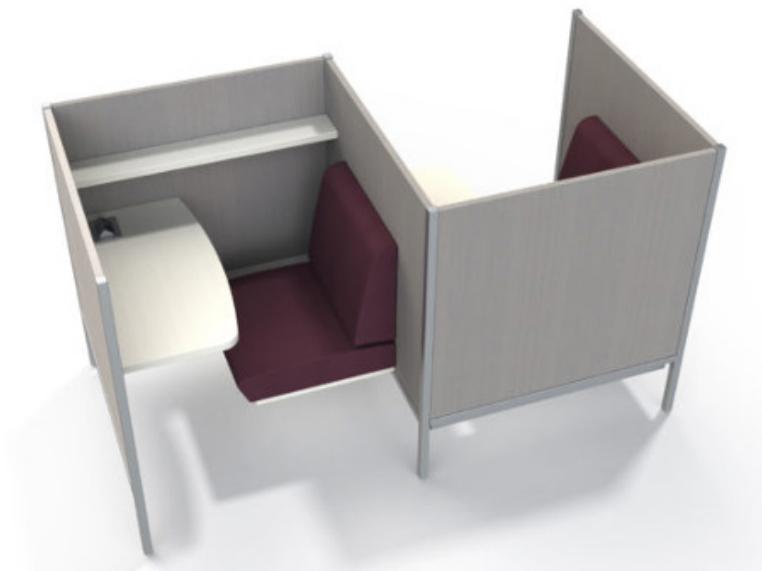
LEVEL 4 DESIGNS: Pola Round

metal and wood. The shell is available in six colors with the option of an upholstered seat cushion or fully upholstered shell, in fabric or leather. Base options include a four leg metal base, aluminum swivel base (with & without casters), four-leg wood base and wood swivel base. [Read More](#)

**>Nora Lighting's Cyndi cylindrical LED rail head features full rotation aiming and two field-changeable beam spreads: 25° spot and 50° narrow flood.** It is offered in three sizes and can be at-

tached anywhere along Nora's 120V bendable Rail System. The fixtures are constructed from die-cast aluminum with finishes in bronze or brushed nickel for a dramatic accent or general lighting statement in commercial and residential applications. The series is fully dimmable and can be specified as 8W (600L), 20W (1400L) or 32W (2800L) LED. [Read More](#)

**>Poppin introduced the QT Chair Booth, following the success of its QT Chair.** Designed to foster both collaborative and individual



AGATI Furniture: Roland Nook



Nora: Cyndi Rail LED



*Poppin: QT Chair Booth*

work, the The QT Chair Booth can be used as a private niche, a space divider, or a small “conference room” for intimate meetings. It was developed to block distractions, encourage uninterrupted focus, and provide turnkey private space for two-person meetings. The chair responds to the increasing demand for flexibility in the workplace—it can serve as a space for interviews, a private escape in the midst of an open floor plan, or a comfortable resting place in the break room. [Read More](#)

**>Skram Furniture launched the Wishbone Executive Desk, a new addition to its Wishbone Collection.** Fully-customizable, the new desk features a large-scale ‘L’ shape, incorporating the Wishbone aesthetic of daring cantilever and streamlined proportions. It includes a clear span on the ‘user’ side for unobstructed movement, concealed power/data and wire management options, integrated keyboard pull-out drawer, and access to the full complement of Skram’s material selections for both the woodwork and the metalwork. Options for customization include material, scale, and configuration. [Read More](#)



*Skram Furniture: Wishbone Executive Desk*

## officeneWSwire

### NOTEWORTHY

**>John Gols was promoted to the position of Chief Commercial Officer at Inscape.**

In this new role, he will lead the integration of Inscape’s externally driven Sales force with a key internal driver, Supply Chain. As a result, both Sales and Supply Chain now report to Mr. Gols. “This promotion supports our efforts to improve the connection between Sales and the entire Supply Chain to improve fulfillment, responsiveness and efficiency,” said Inscape CEO Brian Mirsky. “John has made significant contributions to Inscape’s success, including strengthening our sales team, expanding our committed distribution, building brand awareness, and helping to secure key accounts for Inscape. John has more than 20 years of sales experience in the office furniture industry and his broad range of expertise will be an asset in his new role.” [Read More](#)



*John Gols*

**>Nick Guerrieri was named Chief Financial Officer and Treasurer at KI.** Mr. Guerrieri joined KI in 1997 as Manager of Accounts Payable and Invoice Processing. Since then,

he has held various finance roles of increasing responsibility and was promoted into his most recent role, Corporate Controller, in 2011. “I’ve worked closely with Nick for many years and have every confidence that he will provide the leadership and financial prudence that are hallmarks of KI,” KI CEO Dick Resch said. [Read More](#)



*Nick Guerrieri*

**>Patricia Rotondo, Senior Principal and Director of Interior Design at Antunovich Associates, is IIDA’s 2018 Member of the Year.**

This award recognizes and honors an IIDA Member who has demonstrated outstanding volunteer service through commitment, passion, professionalism, and devotion to assisting IIDA as it advances the interior design profession. AQ member of IIDA for more than 15 years, Ms. Rotondo has participated in all aspects of volunteering for the organization, including mentoring through the student program, judging numerous design competitions, participating in IIDA roundtables, and by becoming a part of the President’s Council in 2015. Nationally and internationally,